

## The acoustic insulation is characterized by three different types of insulation - Acoustic correction

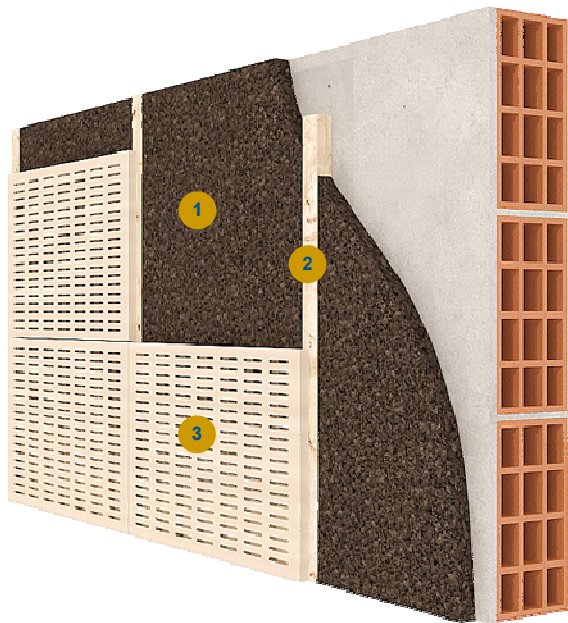
Acoustic correction consists of reducing the sound level in dB (decibels) of a given environment as well as reducing its reverberation time. Expanded Cork Board proves to be an Excellent material

for the acoustic correction of certain environments, such as theatres, class rooms, concert halls, meeting rooms, etc. The Expanded Cork Board reduces the sound level through

absorption effects, allowing a reduction in the reverberation times.



## ACOUSTIC CORRECTION



- 1 Expanded Cork Board - ICB
- 2 Lathing
- 3 Perforated panels

### Benefits

- Excellent sound correction effectiveness
- High reduction in overhead and percussive noises
- Avoids the propagation of existing vibrations

### Absorption coefficient for 500Hz

ICB 50mm = 0,40