



Exterior facade coating with cork as external cladding - type REV

The Expanded Cork Boards slabs of the REV type, for exterior cladding, is made from a careful selection of raw materials, with the right density, as a way of improving its mechanical resistance, as well as reducing the water

absorption. Its unique characteristics allow an excellent behavior, even when submitted to the most adverse weather conditions.



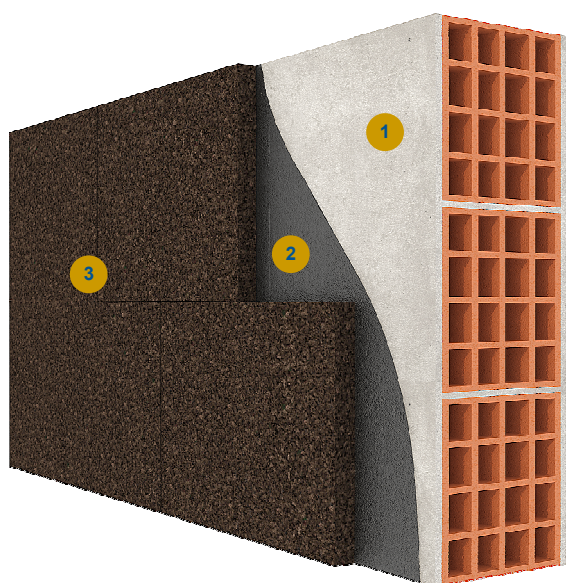
Characteristics

Density	from 140 to 160 Kg/m ³
Thermal conductivity coefficient	from 0,040 to 0,042 W/mK
Water absorption	<0,3 Kg/m ²
Dimensions	1000x500mm
Thicknesses	from 20mm to 240mm

Benefits

- Facade insulation
- Thermal and acoustic insulation
- Natural and ecological product

EXTERIOR FACADE COATING, WITH CORK AS EXTERNAL CLADDING - REV



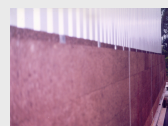
- 1 Wall 2 Fixing 3 Expanded Cork Board - Type REV

Type of fixings

Bonding



Mechanical fixation



Without finishing



With finish

